



# Remediation, Waste and Scrap Containers

## For Road Rail and Sea Transport

2024 Edition



“Our vision is for all the quaysides around the world that have stock piles of concentrates piled in the open to be containerised. If we can achieve this, we have left our mark in a greener world.”

# The Intermodal Solutions Group (ISG)

Containers for Road, Rail & Sea



## Contaminated Soil and Biological Waste Containers

Intermodal Solutions Group (ISG) offers a range of heavy-duty containers for the Waste and Scrap industry. ISG will customise the container to suit your application, cargo and desired payload. The container could be used for a wide range of cargos such as:

- Scrap Steel
- HMS Scrap. (Heavy melting scrap)
- Contaminated Soil
- Radioactive waste
- Biological waste
- Spent pot linings
- Industrial Waste
- General garbage
- Recyclable waste

Our waste containers are fully intermodal meaning they can be transported on Road, Rail and Sea. They are fully tested to International Marine Dangerous Goods code, in addition to Unites States AAR and DOT requirements.

# The Intermodal Solutions Group (ISG)

Containers for Road, Rail & Sea



## Safe and Secure Waste Container Solutions

In 2022, 2023 and 2024 ISG supplied waste containers for the USA market. The ISG engineering team can tailor make your waste container for any project. ISG engineering team designed these containers for the USA marketplace to be moved on both rail and road. The containers are certified to be double stacked on the ABC rail wagons in America. Various waste products are transported using the ISG designed containers.

**Our engineering team is available to assist you with your container designs for your next waste project.**

### Specifications

Weight (kg)		Capacity	
Max. Gross	Tare	Max. Payload	(M <sup>3</sup> )
30480	4320	26160	19.3

# The Intermodal Solutions Group (ISG)

Containers for Road, Rail & Sea



## Wastes and Scrap Containers

### Key Features:

- IMDG BK2 Compliant.
- Watertight, Barn style rear doors
- Hook lift truck compatible,
- AAR Tested – Suitable for operation on USA Rail network.
- Heavy duty construction
- Removable Hard lid or Tarpaulin
- Heavy duty fork pockets (Up to 3R testing)
- Optional underside rollers – allowing for local Pick-up and Delivery with no container handling equipment requirements

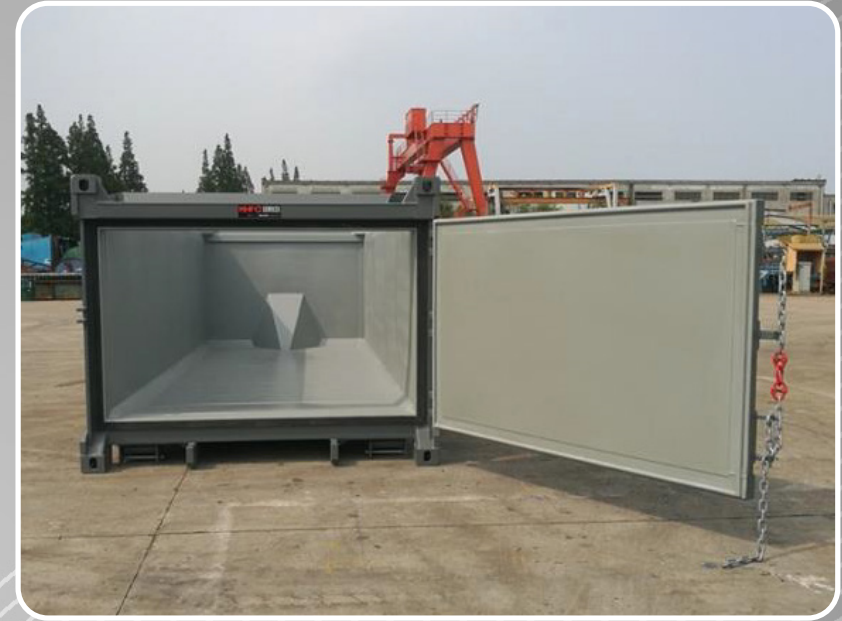
### Hook lift and Rail compatible

ISG Waste containers, can include special hook lift front wall design, and underside rollers.

This allows the containers to be delivered to waste receipt sites with no container handling infrastructure. The container can be loaded by the customer, and then collected by the special hook lift trucks. After collection the containers can be transported by Rail, just like a regular container.

# The Intermodal Solutions Group (ISG)

Containers for Road, Rail & Sea



## Wastes and Scrap Containers

### Barn Style Doors

ISG waste and scrap containers include our special Barn Style doors. The doors are hinged on one side of the container and operated safely from the other side of the container. The locking mechanism is located on the side of the container to protect the operator when the door is opened and cargo is discharged.

The door can be designed to be completely watertight for dangerous and contaminated cargos, or we can design them with no gaskets to ensure maintenance free operation when used with Scrap steel .

# The Intermodal Solutions Group (ISG)

## Containers for Road, Rail & Sea



## Scrap Metal Container

ISG have designed many scrap containers suitable for various waste and scrap products.

This container was built for the Australian domestic market for moving scrap metal via rail from Brisbane to regional NSW

The container is heavy duty and suitable for top loading and rear door discharge.

### Specifications

Weight (kg)		Capacity	
Max. Gross	Tare	Max. Payload	(M <sup>3</sup> )
30480	4200	26280	37.5



# The Intermodal Solutions Group (ISG)

## Containers for Road, Rail & Sea



## 20' Scrap Steel and Waste Containers

ISG specialised 20' Open Top Containers for Scrap steel and Waste are purpose build for the harsh loading and unloading conditions related to these types of products.

Features include:

- Single "Barn Style" Rear Door.
- Door locking mechanism is operated from the side of the container.
- Door locking mechanism is robust, simple to use and easy to maintain.
- Locking mechanism designed for operator safety when unloading the container
- 5mm thick Steel Floor Plate and Side Walls for maximum impact and wear resistance
- Smooth internal walls and door opening to ensure product cannot "Snag" when discharging.
- Heavy Duty Construction
- Suitable for Transport on Road, Rail and Sea

### Specifications

External Dimensions (mm)			Internal Dimensions (mm)			Weight (kg)			Capacity
Length	Width	Height	Length	Width	Height	Max. Gross	Tare	Max. Payload	(M <sup>3</sup> )
6058	2438	2591	5848	2110	2409	30480	4450	26030	39.7

Stacking Test Load 88,430 kg

# The Intermodal Solutions Group (ISG)

Containers for Road, Rail & Sea



## Remediation Containers

ISG understands the critical importance of safe and compliant transportation of waste materials. Our heavy-duty waste containers are designed to meet stringent international regulations for handling scrap metal, removal of contaminated chemical plants waste, biological waste, and other hazardous materials. These fully intermodal containers are tested and certified for road, rail, and sea transport.

The containers used to transport waste in the Roche Clarecastle Site Remediation project have been supplied by ISG. Check out the details at [www.rocheclarecastle.ie](http://www.rocheclarecastle.ie)

Ensure the responsible and secure movement of your waste cargo with ISG's specialized container solutions. Our team of experts will work closely with you to customize the containers to meet your specific requirements and ensure compliance with all relevant safety standards. Reach out to us today for a tailored waste container solution.

### Specifications

Weight (kg)		Capacity	
Max. Gross	Tare	Max. Payload	(M <sup>3</sup> )
32000	4000	28000	27.4



# The Intermodal Solutions Group (ISG)

Containers for Road, Rail & Sea



## Safe and Secure Waste Container Solutions

In 2024 ISG designed and supplied waste containers to Canada for road and rail usage. Waste products vary and the engineering team at ISG can design our waste containers to suit your product that needs to be moved by either rail or road.

ISG can arrange for the certification of the containers in various countries around the world. Australia, Canada, America, Ireland and Europe have some of the most stringent regulations on the globe and ISG has had our designs certified to be used in these countries.

**Our engineering team is available to discuss your logistic requirements on [www.pittoship.com](http://www.pittoship.com)**

### Specifications

Weight (kg)		Capacity	
Max. Gross	Tare	Max. Payload	(M <sup>3</sup> )
30530	4700	25830	24.5

# ISG Pit to Ship Solutions™

**ISG**, helping you on your way to your Environmental, Social and Corporate Governance journey (**ESG**).



# ISG Pit to Ship Solutions™ CAPEX or OPEX Logistic, Storage and Ship Loading System



**Fertilizer Grade Container**

**Introduction:** Intermodal Solutions Group (ISG) supply a logistical, storage and ship loading system to the fertiliser bulk industry.

ISG is Benchmarking their successful minerals system which has been implemented around the world using bulk containers and their patented lid lifting system on the tippler, to the fertilizer industry.

**The system:** The bulk containers are loaded at the production facility either by loading chutes or conveyor belts into the container roof hatches.

Once loaded the containers are sealed and the lid is not removed again until the bulk product is ready to be emptied.

The containers are transported by road or rail to the loading port. **Container ports** are employed for international export. **River ports** are utilised for river distribution



**Tippler Loading**

**Storage:** The containers are used as storage sheds eliminating the usage of conventional dust and labour-intensive sheds. **No double handling.**

**At the river ports** some customers have bagging facilities so the bulk product is unloaded using the container tippler into the bagging shed through a chute arrangement which then delivers the product into bags for river distribution.

**At the ocean ports** some customers use the current port facilities with the addition of the container tippler. When the ship arrives, the containers are moved around to the quay side and lifted into the ships hold. The lid is automatically lifted off the container and then the tippler rotates the container 360degrees emptying the fertilizer into the ships hold.

The lid is then replaced and the containers are taken back to the processing plant to start the loop again.

**Green and Clean ISG , helping you on your way to your Environmental , Social and Corporate Governance journey (ESG)**



## Pit to Ship Solutions™

Suite 210/33 Lexington Drive  
Bella Vista NSW 2153 AUSTRALIA

Phone: +61 400 035 548  
www.pittoship.com



See live videos on our website of ships being loaded at: [www.pittoship.com](http://www.pittoship.com)

See live videos on our website of ships being loaded at: [www.pittoship.com](http://www.pittoship.com)