

# The Intermodal Solutions Group (ISG)

Pallet Wide Containers for Road Rail & Sea

**2024 Edition**



“Our vision is for all the quaysides around the world that have stock piles of concentrates piled in the open to be containerised. If we can achieve this, we have left our mark in a greener world.”

2. Table of Contents
3. Company Background
4. 40' Australian Domestic Pallet Wide
5. 40' Pallet Wide - Slim Wall
6. 40' Pallet Wide - Sea Cell Friendly
7. 48' Hardsides
8. Curtain Side Containers
9. 24' Curtain Side Containers
10. 25' Curtain Side Containers
11. 40' Curtainsides - Heavy Duty
12. 40' Curtainsides - Partial Centre Wall Low Base
13. 48' Curtainsides
14. 48' Curtainsides - Kiwi Rail
15. 20' Side Door Containers
16. 20' Ventilated High Cube Side Door
17. Standard Bulk Containers
18. Bulk - Smooth Wall and Paper Friendly
19. Refrigerated Containers
20. Refrigerated Containers
21. 40' Plus Pallet Wide Refrigerated with Deck Beams
22. 46'6" Pallet Wide Refrigerated with Deck Beams
23. 48' Plus Pallet Wide Refrigerated with Deck Beams
24. Steel Rod and Coil Racks
25. 20' Half Height - Merchant Bar Steel Rack
26. 40' Half Height - Merchant Bar Steel Rack
27. 20' Horizontal and Vertical Coil Carrier with Removable Lid
28. Transiflats
29. 20' Bulk Open Top Containers for End Tipping
30. FLEXITOP – Multipurpose – Pallet Wide
31. FLEXITOP – Bulk Grain
32. FLEXITOP – Bulk Coal
33. FLEXITOP - Ore Container
34. Coke and Anode Bulk Containers
35. Removalist Containers
36. Container Hire Companies
37. 20' Scrap Steel and Waste Containers
38. Safe and Secure Waste Container Solutions
39. Safe and Secure Waste Container Solutions
40. Safe and Secure Waste Container Solutions
41. Tippler Friendly Container Range
42. Container Blending Flow Chart
43. Tippler Friendly Container Range
44. Tippler Friendly Container Range
45. Fertilizer Grade Containers



Copper being loaded  
for Codelco in Chile

# The Intermodal Solutions Group (ISG)

Containers for Road, Rail & Sea



## Company Background

The Intermodal Solutions Group of Companies is an Australian owned group of companies specialising in the design, manufacture and supply of a comprehensive range of handling, transport and storage solutions.

### Business Units:

#### Pallet wide containers

Dry and refrigerated Containers designed for the Australian and New Zealand domestic market . Most of these container designs are 2.5m wide to accommodate two CHEP pallets side by side.

#### Steel racks and flat racks

Specially designed racks for the transport of steel coils and bars. Our engineers can design these to suit your product.

#### Removalist containers

Containers designed for house hold removalist companies

#### Waste transport containers

Bulk waste containers for cartage of waste products

#### Bulk mining division

Tipler friendly containers for concentrates , grain , fertilizers

# The Intermodal Solutions Group (ISG)

Containers for Road, Rail & Sea



## 40' Australian Domestic Pallet Wide

ISG has developed a Pallet Wide container specifically for the Australian domestic road and rail system. The unit is capable of having two CHEP pallets loaded side by side inside the container. Units are fitted with heavy duty fork pockets, 20' chain lift positions and full depth corrugated walls. Units can be fitted with Deck Beams which have been trialed in the harshest of Australian conditions.

Container Specifications	External Dimensions (mm)			Internal Dimensions (mm)			Weight (kg)			Capacity
	Length	Width	Height	Length	Width	Height	Max. Gross	Tare	Max. Payload	(M <sup>3</sup> )
40x2500x9'6" PW	12192	2500	2896	12051	2422	2414	34000	4410	29590	78.3
40x2500x9'10" PW	12192	2500	2997	12050	2422	2793	34000	4350	29650	81.5
40x2500x9'10" PW (+ load bars)	12192	2500	2997	12051	2422	2793	34000	5150	28850	81.5

# The Intermodal Solutions Group (ISG)

Containers for Road, Rail & Sea



## 40' Pallet Wide - Slim Wall

ISG manufactures pallet wide containers which are compatible with the cell guides on container ships. This is achieved using slim wall construction. These containers are available with standard flooring or with special flooring to suit the Jo-Loader track system. Other features include:

- Tie Rails on internal walls
- D-Rings recessed into the floor and side walls for cargo restraint
- Adjustable shoring bars
- Custom doors to protect locking gear and increase cargo access

Container Specifications	External Dimensions (mm)			Internal Dimensions (mm)			Weight (kg)			Capacity
	Length	Width	Height	Length	Width	Height	Max. Gross	Tare	Max. Payload	(M <sup>3</sup> )
40'x2462x9'6 Slim Wall	12192	2462	2896	12050	2422	2692	34000	4200	29800	78.6
40x2462x9'10 Slim Wall	12192	2462	2997	12050	2422	2793	34000	4350	29650	81.5
40x2462x9'10 Slim Wall Jo-Loader Floor	12192	2462	2997	12102	2414	2788	32150	5150	27000	81.4
40x2462x10'6 Slim Wall Jo-Loader Floor	12192	2462	3200	12102	2414	2991	32290	5290	27000	87.4
STANDARD UNIT (with fork pockets)	12192	2462	2896	12051	2422	2692	30480	4100	26380	78.6

# The Intermodal Solutions Group (ISG)

Containers for Road, Rail & Sea



## 40' Pallet Wide - Sea Cell Friendly

ISG manufactures pallet wide containers which are sea cell friendly. Generally pallet wide containers are too wide to be loaded into cell guides on international shipping vessels. The Sea Cell Friendly design has side wall corrugations which are offset on each side of the container. This allows the containers to be loaded side by side in cell guides, with adjacent corrugations being able to clear each other due to the offset design.

### Specifications

External Dimensions (mm)			Internal Dimensions (mm)			Weight (kg)		Capacity	
Length	Width	Height	Length	Width	Height	Max. Gross	Tare	Max. Payload	(M <sup>3</sup> )
12192	2484	1800	12100	2276	2694	34000	4160	29840	79.1

# The Intermodal Solutions Group (ISG)

Containers for Road, Rail & Sea



48' x 2500mm x 9'10" with load bars



48' x 2500mm x 9'10" Standard



## 48' Hardsides

ISG has a wide range of Pallet Wide 48ft Hard Side units capable of transporting 24 CHEP pallets on the floor of the container. These units can be supplied with load bars for double stacking of pallets, increasing capacity to 48 CHEP pallets.

Container Specifications	External Dimensions (mm)			Internal Dimensions (mm)			Weight (kg)			Capacity (M <sup>3</sup> )
	Length	Width	Height	Length	Width	Height	Max. Gross	Tare	Max. Payload	
48x2500x9'6" chainlift and fork pockets	14630	2500	2896	14470	2422	2698	32000	5280	26720	94.6
40x2462x9'10 Slim Wall	14630	2500	2896	14470	2422	2698	32000	4980	27020	94.6
40x2462x9'10 Slim Wall Jo-Loader Floor	14630	2500	3000	14470	2422	2802	32000	5140	26860	98.2
40x2462x10'6 Slim Wall Jo-Loader Floor	14630	2500	3000	14470	2422	2802	32000	6120	25880	98.2

# The Intermodal Solutions Group (ISG)

Containers for Road, Rail & Sea



## Curtain Side Containers

ISG curtain side containers are built tough for Australian road and rail.

### Features Include:

- 20' , 24' ,25', 40',48' and 48' Plus units
- Load binder winches and straps
- Sliding load binders
- Fixed or movable roof supports
- Partial walls for low base designs
- High quality sign written curtains
- Suspended gate system
- Recessed 2500kg D-rings in floor
- Tool box
- Mezzanine Decks (fixed post units only)
- In-rail buckles to reduce maintenance costs
- Alloy tensioners



# The Intermodal Solutions Group (ISG)

Containers for Road, Rail & Sea



24' Curtainside



Two 24' Curtainsides connected to form a 48' container



## 24' Curtain Side Containers

ISG can develop containers to suit your custom requirements. Examples include:

**24ft Curtainside Container:** The 24ft Curtainside Container was developed for Pacific National. This container can be connected to form a 48ft container. This is an ideal option for customers that do not have enough to fill an entire 48ft container.

24x2500x9'10" Curtainside Specifications

External Dimensions (mm)			Internal Dimensions (mm)			Weight (kg)			Capacity
Length	Width	Height	Length	Width	Height	Max. Gross	Tare	Max. Payload	(M <sup>3</sup> )
7315	2502	2997	7211	2446	2697	24890	3890	21000	47.5

# The Intermodal Solutions Group (ISG)

Containers for Road, Rail & Sea



## 25' Curtain Side Containers

ISG has developed a range of products suited for the New Zealand Rail System, which is operated by KIWI RAIL.

We have developed a 25' curtain sides container with Mezzanine Deck. The container is fully intermodal, meaning it can be lifted loaded from the 25' top lift position.

Suitable for loading pallets up to 1100mm high above and below the deck. Designed to suit international pallet dimensions of 1000mm x 1200mm. Fitted with suspended gate systems and load tested curtains.

### 25' Curtain Side Specifications

External Dimensions (mm)			Internal Dimensions (mm)			Weight (kg)			Capacity
Length	Width	Height	Length	Width	Height	Max. Gross	Tare	Max. Payload	(M <sup>3</sup> )
7600	2500	2896	7458	2440	2595	24000	4100	19900	45.9

# The Intermodal Solutions Group (ISG)

Containers for Road, Rail & Sea



## 40' Curtainsides - Heavy Duty

ISG has a wide range of Heavy Duty Pallet Wide 40ft Curtainside units in heights of either 9'6" or 9'10".

Heavy duty units are constructed to handle an increased MGW of 35,000 kg

\* Internal width between roof supports 2376 mm.

9'6" Side Opening Dimensions = 11850mm x 2416mm

\*\* MGW 24000 kg for sea, MGW 30480 kg for rail transport.

9'10" Side Opening Dimensions = 11850mm x 2517mm

Container Specifications	External Dimensions (mm)			Internal Dimensions (mm)			Weight (kg)			Capacity (M <sup>3</sup> )
	Length	Width	Height	Length	Width	Height	Max. Gross	Tare	Max. Payload	
40x2500x9'6" Heavy Duty	12192	2502	2997	11877	2446*	2497	35000**	6510	28490	72.5
40x2500x9'10" Heavy Duty	12192	2502	2997	11877	2446*	2598	35000**	6560	28440	75.3

# The Intermodal Solutions Group (ISG)

Containers for Road, Rail & Sea



## 40' Curtainsides - Partial Centre Wall Low Base

ISG has a wide range of Partial Centre Wall, Low Base Pallet Wide 40ft Curtainside units in heights of either 9'6" or 9'10".

+ Partial Centre Wall container is built under license.

9'6" Side Opening Dimensions = 11782mm x 2535mm

9'10" Side Opening Dimensions = 11782mm x 2636mm

Container Specifications	External Dimensions (mm)			Internal Dimensions (mm)			Weight (kg)			Capacity (M <sup>3</sup> )
	Length	Width	Height	Length	Width	Height	Max. Gross	Tare	Max. Payload	
40x2500x9'6" Low Base	12192	2502	2896	12002	2442*	2598	35000	6100	28440	75.3
40x2500x9'10" Low Base	12192	2502	2997	12002	2442*	2700	35000	6200	28900	77.5

# The Intermodal Solutions Group (ISG)

Containers for Road, Rail & Sea



## 48' Curtainsides

ISG has 48ft Curtainside units available with a range of options including: Suspended Gates System, Custom Livery, Extra Ventilation, Heat Reflective Roof Coating, and Flush Curtain Buckles in the bottom side rail to reduce damage when loaded into Well Wagons.

\* Available Length for each load compartment    \*\*Available Width for each load compartment

Container Specifications	External Dimensions (mm)			Internal Dimensions (mm)			Weight (kg)			Capacity (M <sup>3</sup> )
	Length	Width	Height	Length	Width	Height	Max. Gross	Tare	Max. Payload	
48x2500x9'10" Single Stack	14746	2500	3000	1247/12018/1247	1199/2444/1199*	2644	32000	7770	24230	92.9
48x2500x9'10" Double Stack	14746	2500	3000	1245/3570/4760 /3570/1245	1195/1195/2444 /1195/1195	2596	35000	9390	25610	90

# The Intermodal Solutions Group (ISG)

## Containers for Road, Rail & Sea



## 48' Curtainsides - Kiwi Rail

ISG has designed the first 48' Curtainside containers for KIWI RAIL.

These containers are fully intermodal and can be lifted with a full payload. The containers are designed for loading whilst still on the wagons, at the customers siding.

The unit has a full 40' centre section, with 2 end compartments for fragile or dangerous cargo.

Containers have suspended gate system and load rated curtains. Suitable for loading international pallet size 1000mm x 1200mm.

### 48'x2500x9'6" Container Specifications

External Dimensions (mm)			Internal Dimensions (mm)			Weight (kg)			Capacity
Length	Width	Height	Length	Width	Height	Max. Gross	Tare	Max. Payload	(M <sup>3</sup> )
14813	2500	2896	1280.9	2444	2540	30480	7900	22580	88.8

# The Intermodal Solutions Group (ISG)

Containers for Road, Rail & Sea



20' x 2500mm x 9'6" Standard



20' x 2500mm x 9'10" Vented



Mezzanine Deck



## 20' Side Door Containers

ISG manufactures a range of 20' Side Door Containers with Bi-Fold doors and Mezzanine decks. Units are available with vented, partially vented and non-vented side doors.

\* Units are provided with provision to install decks at various heights.

Container Specifications	External Dimensions (mm)			Internal Dimensions (mm)			Weight (kg)			Capacity (M <sup>3</sup> )
	Length	Width	Height	Length	Width	Height	Max. Gross	Tare	Max. Payload	
20x2500x9'6"	6100	2502	2896	6002	2397	2643	30480	3820	26660	38
20x2500x9'10"	6100	2502	2997	6002	2397	2744	30480	3910	26570	39.5
20x2500x9'10" Vented	6100	2502	2997	6002	2397	2744	30480	4350	26160	38.9
20x2438x8'6"	Specifications coming soon									
Mezzanine Deck	N/A	N/A	N/A	6002	2397	N/A	11650	1150	10500	N/A

# The Intermodal Solutions Group (ISG)

Containers for Road, Rail & Sea



## 20' Ventilated High Cube Side Door

### Features Include:

- Ventilated slim line doors.
- Insulated sandwich panel roof.
- High internal capacity.
- Load binders and straps.
- Mezzanine deck with adjustable height.
- Designed especially for Australian road and rail.
- Pallet Wide 20 pallets 1200 x 1200

### Specifications

External Dimensions (mm)			Internal Dimensions (mm)			Container Weight (kg)			Deck Weight (kg)		
Length	Width	Height	Length	Width	Height	Max. Gross	Tare	Max. Payload	Max. Gross	Tare	Max. Payload
6100	2500	3050	6002	2422	2786	30480	4250	26230	11560	1060	10500



# The Intermodal Solutions Group (ISG)

Containers for Road, Rail & Sea



20' x 2500 x 9'6  
Pallet Wide Dry Bulk  
Container (Front  
Hatches).

Features three hatches  
in front wall  
Fits 10 Australian CHEP  
pallets on the floor.



20' x 2438 x 9'6  
ISO Dry Bulk  
Container (Letter  
Box Hatch).

Features letter  
box hatch in front  
wall and rear door  
hatches.



## Standard Bulk Containers

ISG manufactures high quality heavy duty Dry Bulk Containers. Dry Bulk Containers can be supplied with various features. Some of these features are: Letter Box Hatches, Door Hatches, Roof Hatches with internal release mechanism, Smooth Walls, Fixings and tie downs for liner bags, Pallet Wide for Australian CHEP pallets.

### Specifications

Container	External Dimensions (mm)			Internal Dimensions (mm)			Weight (kg)			Capacity (M <sup>3</sup> )
	Length	Width	Height	Length	Width	Height	Max. Gross	Tare	Max. Payload	
20'x2438x9'6" Bulk	6058	2438	2895	5847	2324	2704	30480	3080	27400	36.7
20x2500x9'6" Bulk	6058	2500	2896	N/A	2395	2704	30480	3300	27180	38.1

# The Intermodal Solutions Group (ISG)

Containers for Road, Rail & Sea



## Bulk - Smooth Wall and Paper Friendly

ISG manufactures high quality smooth wall bulk containers for transporting a wide range of bulk products and general purpose cargo. Smooth wall designs are excellent for food grade products and paper products. High quality paint systems used on these containers ensures long life in harsh conditions. We can offer complete solutions including the design and manufacture of accessories such as hoppers and liner bag systems.

Please contact Pit to Ship Solutions to develop custom bulk containers to suit your particular application.

Specifications - 20x2500x9'6" Bulk (Smooth Wall)

External Dimensions (mm)			Internal Dimensions (mm)			Weight (kg)		Capacity	
Length	Width	Height	Length	Width	Height	Max. Gross	Tare	Max. Payload	(M <sup>3</sup> )
6058	2500	2895	5893	2400	2665	35000	3190	31810	37.7

# The Intermodal Solutions Group (ISG)

## Containers for Road, Rail & Sea



## Refrigerated Containers

ISG product range includes refrigerated containers, manufactured specifically for the Australian market place.

- Standard ISO Electric Only Containers
- Pallet Wide Diesel Electric Containers
- 20' and 20' Plus
- 40' and 40' Plus
- 46' Plus and 48' Plus
- External heights of up to 9'10"
- Dual Zone - Freezer Chiller Units

All containers are designed and tested to Australian and ISO Standards and are manufactured using the latest technology in the refrigerated transport industry to ensure maximum thermal efficiency, to ensure your product arrives fresh each and every time. This next generation container is purpose built for Australian road and rail, The units have an ultra-low tare weight with superior strength and payload. Loading and unloading will never be simpler with our unique double racking system.

# The Intermodal Solutions Group (ISG)

## Containers for Road, Rail & Sea



## Refrigerated Containers

### Features of ISG Refrigerated Containers:

- High payload and low tare weight
- Load bars to allow double stacking of pallets.
- Can be handled via "Top Lift" 40' ISO positions when empty or loaded.
- Reinforced side wall structure to allow double stacking capabilities.
- High density foaming used to maximise thermal properties.
- Fork lift rated aluminium ducted air flow flooring.
- Reinforced duct floor so no sagging.
- Sunken Floor to improve internal height
- Flat Floor is also available with higher strength and reduce cleaning time.
- Replaceable upper and lower scuff liners.
- Scuff liners are aluminium or stainless steel

### Internal fit out can be customised to your specific needs

- Easily maintained recessed "load trough",
- Decking/load beams
- Recessed load restraint "F" track
- Shoring bars
- Internal roof lighting
- Internal storage areas for all components.
- Emergency escape mechanisms fitted to doors.
- Diesel and electric powered refrigeration plants
- Motor unit front protective frame fitted.
- Fuel tank.
- Thermo King or Carrier Units can be fitted.

# The Intermodal Solutions Group (ISG)

Containers for Road, Rail & Sea



40' Plus x 2500mm x 9'10" Heavy Duty



40' Plus Heavy Duty Containers Stacked



## 40' Plus Pallet Wide Refrigerated with Deck Beams

Heavy Duty 40' Plus unit specifically developed for the Australian domestic market. This unit has a high payload and low tare weight, with maximum internal dimensions. Features Include:

- Recessed F-Track (flush wall)
- Recessed heavy duty deck beam trough
- Airflow or Flat Floor
- Floor is reinforced to reduce fork damage
- Emergency escape hatch
- Front protection frame and fuel tank

41'3"x2500x9'10" Heavy Duty (40 pallets double stacked) Specifications

External Dimensions (mm)			Internal Dimensions (mm)			Weight (kg)			Capacity
Length	Width	Height	Length	Width	Height	Max. Gross	Tare	Max. Payload	(M <sup>3</sup> )
12573	2500	3000	11780	2380	2727	37000	5440*	31560	76.5

\*Tare weight includes all internal accessories, excluding motor and fuel tank.

# The Intermodal Solutions Group (ISG)

Containers for Road, Rail & Sea



## 46'6" Pallet Wide Refrigerated with Deck Beams

Heavy Duty 46'6" Plus unit specifically developed for the Australian domestic market. This unit has a high payload and low tare weight, with maximum internal dimensions. Features Include:

- Recessed F-Track (flush wall)
- Recessed heavy duty deck beam trough
- Airflow or Flat Floor
- Floor is reinforced to reduce fork damage
- Emergency escape hatch
- Front protection frame and fuel tank

46'6"x2500x9'10" Std. (44 Pallets double stacked) Specifications

External Dimensions (mm)			Internal Dimensions (mm)			Weight (kg)			Capacity
Length	Width	Height	Length	Width	Height	Max. Gross	Tare	Max. Payload	(M <sup>3</sup> )
14185	2500	3000	13228	2380	2715	40000	6110*	33890	85.47

\*Tare weight includes all internal accessories, excluding motor and fuel tank.

# The Intermodal Solutions Group (ISG)

Containers for Road, Rail & Sea



48' Plus x 2500mm x 9'10" Rear Door End



48' Plus x 2500mm x 9'10" Front End (Diesel Electric Motor)



## 48' Plus Pallet Wide Refrigerated with Deck Beams

Heavy Duty 48' Plus unit specifically developed for the Australian domestic market. This unit has a high payload and low tare weight, with maximum internal dimensions. Features Include:

- Recessed F-Track (flush wall)
- Recessed heavy duty deck beam trough
- Airflow or Flat Floor
- Floor is reinforced to reduce fork damage
- Emergency escape hatch
- Front protection frame and fuel tank

48' Plus x 2500 x 9'10 (48 Pallets double stacked) Specifications

External Dimensions (mm)			Internal Dimensions (mm)			Weight (kg)			Capacity
Length	Width	Height	Length	Width	Height	Max. Gross	Tare	Max. Payload	(M <sup>3</sup> )
14911	2500	3000	14130	2380	2727	37000	6920*	28900	91.7

\*Does not include weight of Diesel Electric Motor and Empty Fuel Tank.

# The Intermodal Solutions Group (ISG)

Containers for Road, Rail & Sea



## Steel Rod and Coil Racks

Our experience with the Australian transport industry allows us to develop specialised racks for the carriage of products such as steel rod, coil and scrap. Generally these units are custom designed to suit particular product dimensions.

### Container Types Available

- Vertical and Horizontal Coil racks
- Rod and Bar Racks
- Scrap Steel Bins
- Multipurpose Racks
- Flatracks
- Transflats

### Features and services include:

- Designed to suit product dimensions
- Load restraint design and certification
- Designed to Australian Transport and OH&S requirements
- CAD and 3D modelling to get your concept of the ground
- Non-Slip Matting
- Chains, Winches and Straps



# The Intermodal Solutions Group (ISG)

Containers for Road, Rail & Sea



## 20' Half Height - Merchant Bar Steel Rack

ISG have developed a unique product in the Australian market for the transport of merchant bar on road and rail. Features include:

- Extra Internal Length to allow product lengths of 6050mm to be loaded
- Hinged end wall to allow loading of product with overhead magnets
- Both end walls removable for relocation and customisation.
- Both end walls fully tested and certified as load restraining headboards.
- Corner Posts designed to form transverse restraint of product.
- Removable Stanchions which also restrain timber dunnage blocks
- Internal width allows for loading of five bundles of merchant bar per layer
- Fitted with "EV- CAM" chain winches. Approved by one steel as alternative to dog and chain.
- Restraint system designed specifically to meet the RTA "Load Restraint Guide" requirements.
- Tested in accordance with ISO 1496 and RTA Load Restraint requirements.

### Specifications

Stacking Test Load 86400 kg

External Dimensions (mm)			Internal Dimensions (mm)			Weight (kg)		Capacity	
Length	Width	Height	Length	Width	Height	Max. Gross	Tare	Max. Payload	(M <sup>3</sup> )
20' Plus	2500	1250	6100	2200	1000	30480	2700	27780	13.2

# The Intermodal Solutions Group (ISG)

Containers for Road, Rail & Sea



## 40' Half Height - Merchant Bar Steel Rack

ISG have developed a unique product in the Australian market for the transport of merchant bar on road and rail. Features include:

- Extra Internal Length to allow product lengths of 12,200mm to be loaded
- Fitted with movable headboards to accommodate 6-9m product lengths
- End walls and movable headboards fully tested and certified as load restraining.
- Suitable for double stacking with another 40' unit of same type..
- Can have a loaded 20' container double stacked in centre position
- Corner Posts and centre posts designed to form transverse restraint of product.
- Loaded top lifted from intermediate 20' posts and bottom lift from 20' Chain lift points.
- Fitted with "EV- CAM" chain winches. Approved by one steel as alternative to dog and chain.
- Restraint system designed specifically to meet the RTA "Load Restraint Guide" requirements.
- Tested in accordance with ISO 1496 and RTA Load Restraint requirements.

### Specifications

Stacking Test Load 86400 kg

External Dimensions (mm)			Internal Dimensions (mm)			Weight (kg)				
Length	Width	Height	Length	Width	Height	Max. Gross	Tare	Max. Payload	Movable Headboard	Headboard Rated
40' Plus	2500	1100	12184	2188	739	30480	5190	25290	270	10120

# The Intermodal Solutions Group (ISG)

Containers for Road, Rail & Sea



## 20' Horizontal and Vertical Coil Carrier with Removable Lid

ISG have developed a container specifically designed for carrying steel coils in either the vertical or horizontal position.

- Removable Hard Lid
- Fitted with movable coil racks for restraining coils in the horizontal position.
- Full length channels with rated load restraint positions for Vertical Coil restraint
- Floor of container covered with brand new conveyor belt material for increased friction.
- Loaded top lifted from 20' posts and bottom lift from 20' lift points.
- Fitted with "EV- CAM" chain winches. Approved by one steel as alternative to dog and chain.
- Restraint system designed specifically to meet the RTA "Load Restraint Guide" requirements.
- Tested in accordance with ISO 1496 and RTA Load Restraint requirements.

### Specifications

External Dimensions (mm)			Internal Dimensions (mm)			Weight (kg)			Capacity
Length	Width	Height	Length	Width	Height	Max. Gross	Tare	Max. Payload	(M <sup>3</sup> )
6058 (20')	2438 (8')	2160	5844	2224	1535	35000	4660	30340	N/A

# The Intermodal Solutions Group (ISG)

Containers for Road, Rail & Sea



## Transflats

ISG can design, test and manufacture Transflats to suit your requirements. End gates and side gates are supplied with the transflat units. Gates can be customised to suit your operational requirements. Transflats are fitted with full length tie rails. Winches and other load restraint equipment such as EV-CAM's which can be fitted during production.

### 40x2500x250mm Transflat Specifications

External Dimensions (mm)			Internal Dimensions (mm)			Weight (kg)			Capacity
Length	Width	Height	Length	Width	Height	Max. Gross	Tare	Max. Payload	(M <sup>3</sup> )
12230	2500	1852	N/A	N/A	N/A	32000	3900	28100	N/A

# The Intermodal Solutions Group (ISG)

Containers for Road, Rail & Sea



## 20' Bulk Open Top Containers for End Tipping

ISG specialised 20' Open Top Containers for Bulk applications are purpose build for the harsh conditions in Australia. Features include:

- 1200mm High rear tipping hatch
- Hatch locking mechanism is operated from the side of the container
- Hatches fitted with "Grain Locks" for maximum safety on road and rail.
- 5mm thick Steel floor plate
- Deflectors fitted to top rails of container
- Fork pockets for loaded lifting
- Can be fitted with Tarpaulin
- Heavy duty construction for harsh products like Coal.

### Specifications

External Dimensions (mm)			Internal Dimensions (mm)			Weight (kg)			Capacity
Length	Width	Height	Length	Width	Height	Max. Gross	Tare	Max. Payload	(M <sup>3</sup> )
6058	2438	2591	5820	2276	2786	31185	3130	28055	32.1

# The Intermodal Solutions Group (ISG)

Containers for Road, Rail & Sea



## FLEXITOP – Multipurpose – Pallet Wide

- Manufactured to suit a range of bulk products and Palletised products.
- Load bulk product one way, palletised finished product on the return journey.
- Fitted with FLEXITOP retractable tarpaulin system.
- Smooth Internal Walls
- Large Tipping Hatch
- Rear Doors
- Pallet wide and capable of 10 pallets on the floor.
- Heavy lift fork pockets.
- Sampling ports can be included, to allow product sampling without opening the Flexitop Tarpaulin.
- Within ISO Dimensions for universal handling.
- Units shown in the photos were manufactured to carry potatoes and finished product for SMITHS crisps.



### Specifications

External Dimensions (mm)			Internal Dimensions (mm)			Weight (kg)		Capacity	
Length	Width	Height	Length	Width	Height	Max. Gross	Tare	Max. Payload	(M <sup>3</sup> )
6100	2500	2896	5875	2354	2311	31600	3600	28000	32

Stacking Test Load 60,960 kg

# The Intermodal Solutions Group (ISG)

Containers for Road, Rail & Sea



## FLEXITOP – Bulk Grain

- Manufactured to suit a range of bulk products such as Wheat and other grain crops.
- Load bulk and discharge bulk product easily and efficiently.
- Fitted with FLEXITOP retractable tarpaulin system.
- Smooth Internal Walls
- Large Tipping Hatch fitted with grain locks.
- Heavy lift fork pockets.
- Sampling ports can be included, to allow product sampling without opening the Flexitop Tarpaulin.
- Stackable empty and loaded.
- Tarp can be operated manually or with power.



### Specifications

External Dimensions (mm)			Internal Dimensions (mm)			Weight (kg)		Capacity	
Length	Width	Height	Length	Width	Height	Max. Gross	Tare	Max. Payload	(M <sup>3</sup> )
6058	2500	2896	5829	2354	2431	31560	3560	28000	33.4

Stacking Test Load 27,960 kg

# The Intermodal Solutions Group (ISG)

## Containers for Road, Rail & Sea



## FLEXITOP – Bulk Coal

- Manufactured to suit a range of lower density products such as Coal, and to suit logistic systems that can only cope with lower payloads.
- Load bulk and discharge bulk product easily and efficiently.
- Fitted with FLEXITOP retractable tarpaulin system.
- Smooth Internal Walls
- Large Tipping Hatch fitted with grain locks.
- Heavy lift fork pockets.
- Sampling ports can be included, to allow product sampling without opening the Flexitop Tarpaulin.
- Stackable empty and loaded.
- Tarp can be operated manually or with power.
- ISO dimensions for universal handling.

The unit shown in the photo was especially made for KIWI RAIL in New Zealand.

### 20x2438x2438 Open Top Container Specifications

External Dimensions (mm)			Internal Dimensions (mm)			Weight (kg)		Capacity	
Length	Width	Height	Length	Width	Height	Max. Gross	Tare	Max. Payload	(M <sup>3</sup> )
6058	2438	2438	5829	2292	1855	23000	3000	20000	24.8



**PATENT PENDING**



# The Intermodal Solutions Group (ISG)

Containers for Road, Rail & Sea



## FLEXITOP - Ore Container

- Manufactured to suit a range of bulk products such as Coal, Ore, Gravel and Fertilizer.
- Fitted with FLEXITOP retractable tarpaulin system.
- Smooth Internal Walls
- Large Tipping Hatch
- Heavy lift fork pockets.
- Within ISO Dimensions for universal handling.

Units shown in the photos were manufactured for KIWI RAIL to replace their existing fleet of coal containers.



20x2438x2438 Open Top (Heavy Duty) Container Specifications

External Dimensions (mm)			Internal Dimensions (mm)			Weight (kg)		Capacity	
Length	Width	Height	Length	Width	Height	Max. Gross	Tare	Max. Payload	(M <sup>3</sup> )
6058	2438	2438	5829	2292	1855	30480	3250	27230	24.8

# The Intermodal Solutions Group (ISG)

Containers for Road, Rail & Sea



## Coke and Anode Bulk Containers

In 2009 and 2010 ISG engineering team worked with ARG a Division of QR National to develop a unique container. The Coke and Anode container is designed to transport coke and coal one way, and then Copper anodes on the return leg. These containers are in service for XTRATA mines and refineries in far north Queensland. Features are:

- Smooth Internal Walls, 3mm Thick
- Steel Floor – 5mm Thick
- Large Tipping Hatch fitted with grain locks.
- Heavy duty racks for carrying packs of Copper anodes
- Side access doors for loading of Anode Racks.
- Heavy lift fork pockets.
- Stackable empty and loaded.
- ISO dimensions for universal handling.

### Specifications

External Dimensions (mm)			Internal Dimensions (mm)			Weight (kg)		Capacity	
Length	Width	Height	Length	Width	Height	Max. Gross	Tare	Max. Payload	(M <sup>3</sup> )
6058	2438	2896	5829	2247	2577	33290	4390	28900	33.8

# The Intermodal Solutions Group (ISG)

Containers for Road, Rail & Sea



## Removalist Containers

Above: Photos showing customer logos added to the containers during production  
Above left: Tie Rails fitted inside the units during production

ISG design and supply containers for your removalist industry needs. These can be new containers purpose built for your requirements or second hand containers for budget requirements.

Removalist containers are available in various sizes from standard 8'6 Containers to "High cube" 9'6 Containers. All removalist containers have internal tie rails on all walls and the roof.

### Specifications

40' Units are also available upon request

Container	External Dimensions (mm)			Internal Dimensions (mm)			Weight (kg)			Capacity
	Length	Width	Height	Length	Width	Height	Max. Gross	Tare	Max. Payload	(M <sup>3</sup> )
20x2438x8'6"	6058	2438	2591	5898	2352	2393	30480	2220	28260	33
20x2438x9'6"	6058	2438	2896	5898	2352	2698	30480	2410	28070	38

Container features include Internal tie rails and customer logo. Specifications noted are approximate and should be used for reference only.

# The Intermodal Solutions Group (ISG)

Containers for Road, Rail & Sea



## Container Hire Companies

ISG is a major supplier to container hire companies Australia wide. Our range of 20' and 40' General Purpose containers and pallet wide containers are competitively priced. Our containers are manufactured in your colour scheme with company logo painted or applied as a decal.

### Benefits of ISG Containers

- High quality economical product
- Custom paint and decals to suit your corporate image
- Fitted with lock boxes to deter thieves
- Internal tie rails if required
- Available in a range of sizes from 20' x 8'6 to 40' High Cube containers
- Can be designed for static storage use only.

# The Intermodal Solutions Group (ISG)

## Containers for Road, Rail & Sea



## 20' Scrap Steel and Waste Containers

ISG specialised 20' Open Top Containers for Scrap steel and Waste are purpose build for the harsh loading and unloading conditions related to these types of products.

Features include:

- Single "Barn Style" Rear Door.
- Door locking mechanism is operated from the side of the container.
- Door locking mechanism is robust, simple to use and easy to maintain.
- Locking mechanism designed for operator safety when unloading the container
- 5mm thick Steel Floor Plate and Side Walls for maximum impact and wear resistance
- Smooth internal walls and door opening to ensure product cannot "Snag" when discharging.
- Heavy Duty Construction
- Suitable for Transport on Road, Rail and Sea

### Specifications

External Dimensions (mm)			Internal Dimensions (mm)			Weight (kg)			Capacity
Length	Width	Height	Length	Width	Height	Max. Gross	Tare	Max. Payload	(M <sup>3</sup> )
6058	2438	2591	5848	2110	2409	30480	4450	26030	39.7

Stacking Test Load 88,430 kg

# The Intermodal Solutions Group (ISG)

Containers for Road, Rail & Sea



## Safe and Secure Waste Container Solutions

ISG understands the critical importance of safe and compliant transportation of waste materials. Our heavy-duty waste containers are designed to meet stringent international regulations for handling scrap metal, removal of contaminated chemical plants waste, biological waste, and other hazardous materials. These fully intermodal containers are tested and certified for road, rail, and sea transport.

The containers used to transport waste in the Roche Clarecastle Site Remediation project have been supplied by ISG. Check out the details at [www.rocheclarecastle.ie](http://www.rocheclarecastle.ie)

Ensure the responsible and secure movement of your waste cargo with ISG's specialized container solutions. Our team of experts will work closely with you to customize the containers to meet your specific requirements and ensure compliance with all relevant safety standards. Reach out to us today for a tailored waste container solution.

### Specifications

External Dimensions (mm)			Internal Dimensions (mm)			Weight (kg)			Capacity
Length	Width	Height	Length	Width	Height	Max. Gross	Tare	Max. Payload	(M <sup>3</sup> )
N/A	N/A	N/A	N/A	N/A	N/A	32000	4000	28000	27.4

# The Intermodal Solutions Group (ISG)

Containers for Road, Rail & Sea



## Safe and Secure Waste Container Solutions

In 2024 ISG designed and supplied waste containers to Canada for road and rail usage. Waste products vary and the engineering team at ISG can design our waste containers to suit your product that needs to be moved by either rail or road.

ISG can arrange for the certification of the containers in various countries around the world. Australia, Canada, America, Ireland, and Europe have some of the most stringent regulations on the globe, and ISG has had our designs certified to be used in these countries.

**Our engineering team is available to discuss your logistic requirements on [www.pittoship.com](http://www.pittoship.com)**

### Specifications

External Dimensions (mm)			Internal Dimensions (mm)			Weight (kg)			Capacity
Length	Width	Height	Length	Width	Height	Max. Gross	Tare	Max. Payload	(M <sup>3</sup> )
N/A	N/A	N/A	N/A	N/A	N/A	30530	4700	25830	24.5

# The Intermodal Solutions Group (ISG)

Containers for Road, Rail & Sea



## Safe and Secure Waste Container Solutions

In 2022, 2023 and 2024 ISG supplied waste containers for the USA market. The ISG engineering team can tailor make your waste container for any project. ISG engineering team designed these containers for the USA marketplace to be moved on both rail and road. The containers are certified to be double stacked on the ABC rail wagons in America. Various waste products are transported using the ISG designed containers.

**Our engineering team is available to assist you with your container designs for your next waste project.**

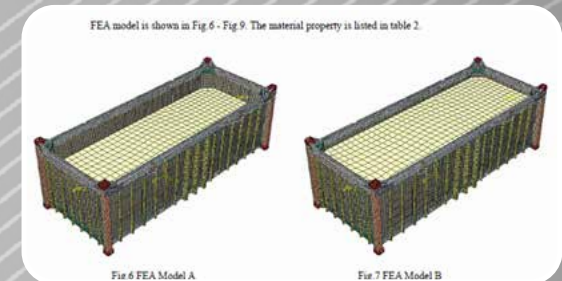
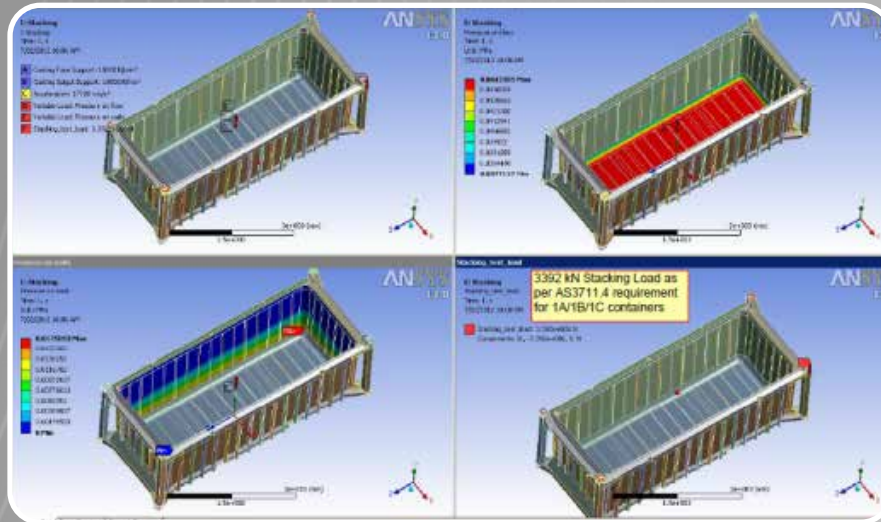
### Specifications

External Dimensions (mm)			Internal Dimensions (mm)			Weight (kg)			Capacity
Length	Width	Height	Length	Width	Height	Max. Gross	Tare	Max. Payload	(M <sup>3</sup> )
N/A	N/A	N/A	N/A	N/A	N/A	30480	4320	26160	19.3



# The Intermodal Solutions Group (ISG)

## Containers for Road, Rail & Sea



## Tippler Friendly Container Range

ISG is the global leaders in the tippler friendly container market called containerised bulk handling (CBH).

ISG has supplied over 35,000 bulk mining containers around the world. OUR bulk website [www.pittoship.com](http://www.pittoship.com) has over 30 plus videos of our fleet in action around the world.

Further to the standard container testing and increased loading of 1x payload on the side wall, Pit to Ship Solutions has performed a series of tests which simulate the life cycle of the container. We perform the following additional tests.

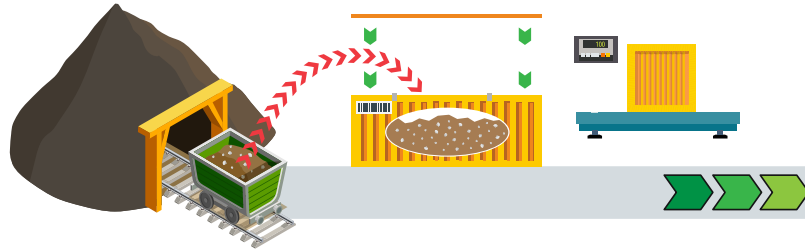
- Load the container with 1.2 x Payload on the side walls and lift from only two top corner fittings.
- Load the container with 1 x payload on the side walls and lift from only two top corner castings up to 250 times. This test simulates 10 years of service with 5 cycles per year.

All tests are witnessed by Lloyd's Register, with witness report issued.

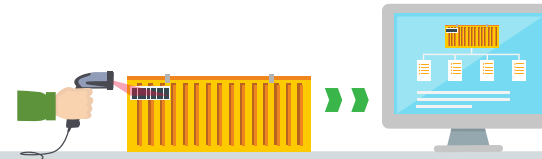
Pit to Ship Solutions will provide the full reports to the customer if we are the successful supplier.

# CONTAINER BLENDING FLOW CHART

**1** The product is loaded at the mine site then sampled in the conventional manner and the containers are sealed. Each container holds around 30 tons of product.



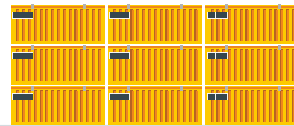
**2** The sample is graded then placed into the computer system. The containers are fitted with RFID tags so they can be tracked and stacked in grade blocks at the port.



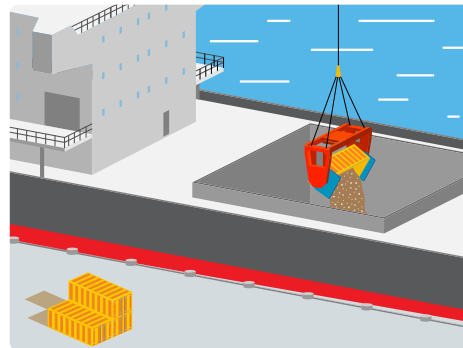
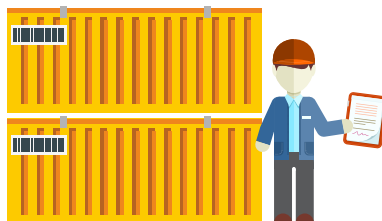
**4** From the database a report is generated using a simple algorithm to determine a precise mix for the ships hold.



**3** The containers are transported via road or rail and then stored at the port.



**6** When the ship arrives the product is tipped into the ships hold in the forecasted sequence to maintain the mix required using a layered system (ie) (200 B grade 300 A grade and 100 C grade ETC).



**7** The bulk ship departs with your blended product on board and the containers are returned to the mine site to start the cycle over again.



**5** At the port the containers are blocked stacked in their grade ratings awaiting the bulk ship to arrive.

# The Intermodal Solutions Group (ISG)

Containers for Road, Rail & Sea



## Tippler Friendly Container Range

In 2014, Intermodal Solutions Group (ISG) manufactured 890 units supplied to CODELCO in Chile. These units can be seen in operation at the Port of Mejillones (Angamos) in Chile. Codelco went to tender for tipplers and containers suitable for class 9 dangerous goods transport and tippler use. ISG was awarded the supply contract for their dust free loading solution. Codelco is the world's largest copper miner and operates in Chile exporting through various port locations.

***The forces from a tippler with pay loads of 28t -42t would destroy a normal container that is why ISG have designed their CONTAINERTIPP fleet.***

***Now in 2024 90% of the ports in Chile and 90% of the mining companies have converted to the Pit to ship solution and Chile has become the benchmark for the logistic , storage and ship loading of concentrates using the ISG solution.***

### Specifications

External Dimensions (mm)			Internal Dimensions (mm)			Weight (kg)		Capacity	
Length	Width	Height	Length	Width	Height	Max. Gross	Tare	Max. Payload	(M <sup>3</sup> )
6058	2438	2000	N/A	N/A	N/A	33350	3350	30000	18.8

# The Intermodal Solutions Group (ISG)

Containers for Road, Rail & Sea



## Tippler Friendly Container Range

Soya bean is being loaded at the port of Rosario in Argentina using the ISG pit to ship solution and the ISG tippler friendly grain containers . The port of Rosario is a brown field site that needs a massive amount of work and money spent on the port to transfer it into a modern facility. The loading of grain is one of the ports major revenue streams. Rather than spending millions of dollars to upgrade the loading process the port looked to ISG Pit To Ship solutions. The patented lid lifter allowed the ISG patented containers to be sealed after loading and become vermin proof until the product is loaded into the ship's hull using a tippler. The lid is removed inside the ship's hull making the process automated and no human interaction is needed making this a safe loading solution.

***The forces from a tippler with pay loads of 28t -42t would destroy a normal container that is why ISG have designed their CONTAINERTIPP fleet.***

### Specifications

External Dimensions (mm)			Internal Dimensions (mm)			Weight (kg)		Capacity	
Length	Width	Height	Length	Width	Height	Max. Gross	Tare	Max. Payload	(M <sup>3</sup> )
6058	2438	2896	5862	2266	2612	30480	3900	26580	34.2

# The Intermodal Solutions Group (ISG)

Containers for Road, Rail & Sea



## Fertilizer Grade Containers

In 2017 ISG was successful with another tender this time for UREA containers . The special designed containers will carry urea from Bolivia to Brazil and using the patented ISG lid lifter will be unloaded in Brazil with RAM tippers.

### Logistic task

Bolivia is a very remote country in South America and is land locked . This was a very challenging task to deliver 500 high cube specialised containers from China to Bolivia . The containers were shipped from China to Chile. In Chile two containers per truck were loaded and the trucks delivered the containers 800 klms into a Bolivian rural area where the urea processing plant was being made. Fertilisers are a very corrosive product and ISG applied special interior paint to assist in the protection of the containers. The containers are loaded through a chute arrangement and the lids were designed to suit the chute loading facility in this remote area of the world.

In 2023 and 2024 ISG has supplied the same container design to BFI in Brunei for the movement of urea from the processing plant to the bulk ships hold. **This video can be seen on the ISG website [www.pittoship.com](http://www.pittoship.com)**

# ISG Pit to Ship Solutions™

**ISG**, helping you on your way to your Environmental, Social and Corporate Governance journey (**ESG**).



# ISG Pit to Ship Solutions™ **CAPEX** or **OPEX** Logistic, Storage and Ship Loading System



**Fertilizer Grade Container**

**Introduction:** Intermodal Solutions Group (ISG) supply a logistical, storage and ship loading system to the fertiliser bulk industry.

ISG is Benchmarking their successful minerals system which has been implemented around the world using bulk containers and their patented lid lifting system on the tippler, to the fertilizer industry.

**The system:** The bulk containers are loaded at the production facility either by loading chutes or conveyor belts into the container roof hatches.

Once loaded the containers are sealed and the lid is not removed again until the bulk product is ready to be emptied.

The containers are transported by road or rail to the loading port. **Container ports** are employed for international export. **River ports** are utilised for river distribution



**Tippler Loading**

**Storage:** The containers are used as storage sheds eliminating the usage of conventional dust and labour-intensive sheds. **No double handling.**

**At the river ports** some customers have bagging facilities so the bulk product is unloaded using the container tippler into the bagging shed through a chute arrangement which then delivers the product into bags for river distribution.

**At the ocean ports** some customers use the current port facilities with the addition of the container tippler. When the ship arrives, the containers are moved around to the quay side and lifted into the ships hold. The lid is automatically lifted off the container and then the tippler rotates the container 360degrees emptying the fertilizer into the ships hold.

The lid is then replaced and the containers are taken back to the processing plant to start the loop again.

**Green and Clean ISG , helping you on your way to your Environmental , Social and Corporate Governance journey (ESG)**



## Pit to Ship Solutions™

Suite 210/33 Lexington Drive  
Bella Vista NSW 2153 AUSTRALIA

Phone: +61 400 035 548  
www.pittoship.com



See live videos on our website of ships being loaded at: [www.pittoship.com](http://www.pittoship.com)

See live videos on our website of ships being loaded at: [www.pittoship.com](http://www.pittoship.com)